



Introduction to Community Schools: A Results Framework

OSSE Community of Practice
November 13, 2020



COALITION FOR
**COMMUNITY
SCHOOLS**

History

- 1997 - IEL becomes coordinating organization
- 1998 – Coalition officially launched in DC
- 2004 – National Steering Committee formed
- 2008 – IEL Scale Up Guide released
- 2010 - \$10 million for FSCS
- 2015 – FSCS authorized in ESSA
- 2016 – IEL releases CS Standards
- 2018 - \$17.5 million for FSCS
- 2019 - \$30 million for FSCS
- 2019 – 4 Presidential candidates promote CS
- 2020 – CS on Biden/Harris education agenda
- 2020 – IEL leads \$500 million request for FSCS



Purpose of Today

- To outline a rationale for the Community School as a primary vehicle for increasing student success and strengthening families and community
- To define specific results that community schools seek—both in terms of how they function and in relationship to the well being of students, families and communities.

Rationale for Community Schools

Prior to COVID-19, what factors made learning challenging for your students that have been exacerbated during COVID-19?

What desires do your families have for themselves and their community?



What advice would you give someone finishing high school this year?

Continue education or trade school

This too shall pass.

Breathe and be gentle with yourself.

Keep learning

Go to College or trade school

try to stay focused

To continue their professional education. Enroll in college

Take a break

You are so close and I know you can do hard things. Be patient and kind with yourself, and don't be afraid to ask for help and to be seen trying.

What advice would you give someone finishing high school this year?

Stay focus, keep going with your education goals.

You are making history

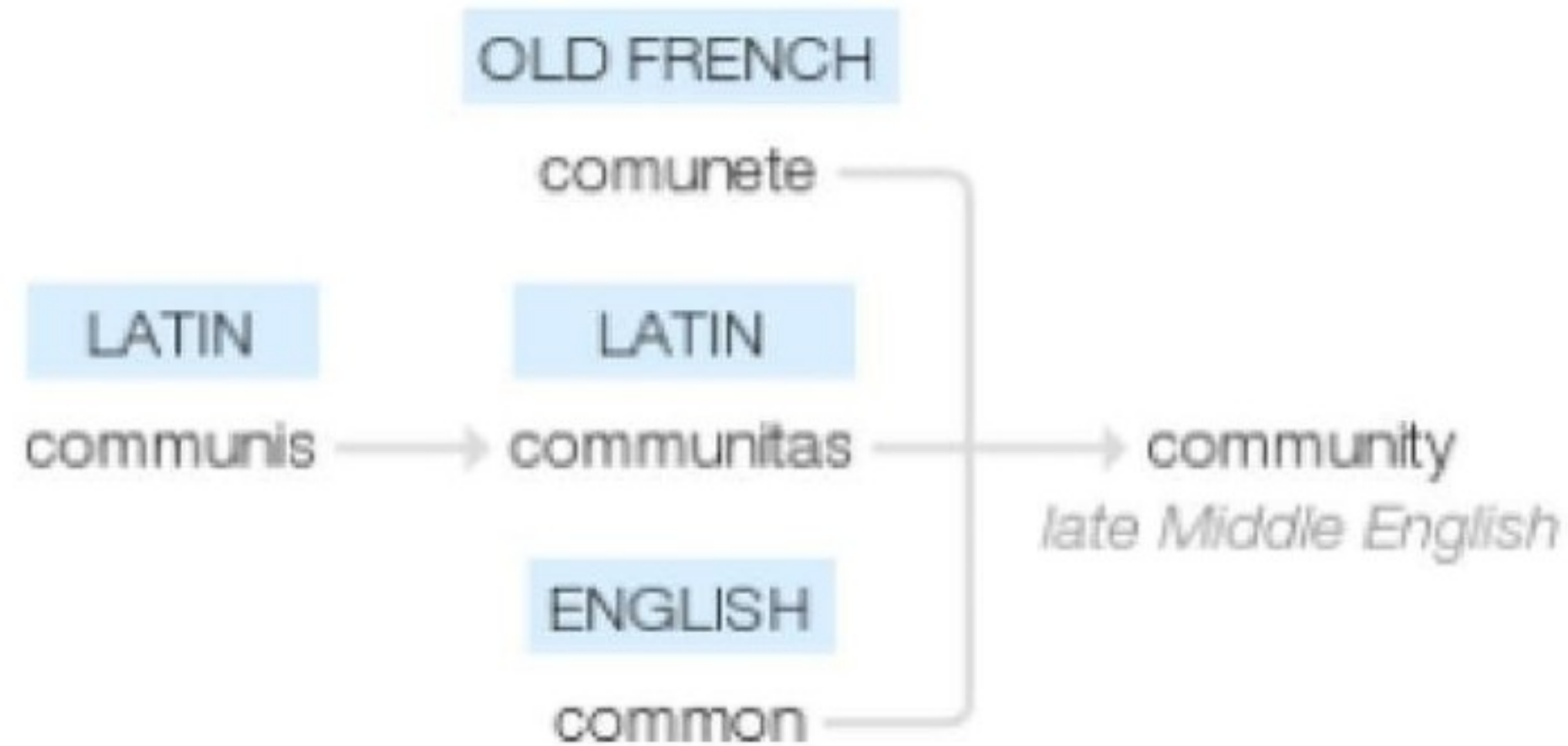
Focus on your gifts



com·mu·ni·ty

/kəˈmyʊnədē/

Origin



Etymology of “Community”

- *Late 14th century derived from communis* "common, public, general, shared by all or many"
- Old French *comunité* "community, commonness, everybody"
- English: Sense of "a society or association of persons having common interests or occupations" OLD ENGLISH: "community, fellowship, union, common ownership,"
- Websters Dictionary: "the people with common interests living in a particular area"

How would you define a
Community School?



Community Schools are a Strategy not a Program

- Community Schools are a strategy that utilizes the communication power of a school to serve as a hub for coordinating community-designed development that advances the education, economic, and healthy well-being of its surrounding residents.
- What makes Community Schools unique is the coordination of four key pillars (or features) that together create the conditions necessary for students to thrive.



The Rationale for Community Schools

Measuring Social Return
on Investment for
Community Schools

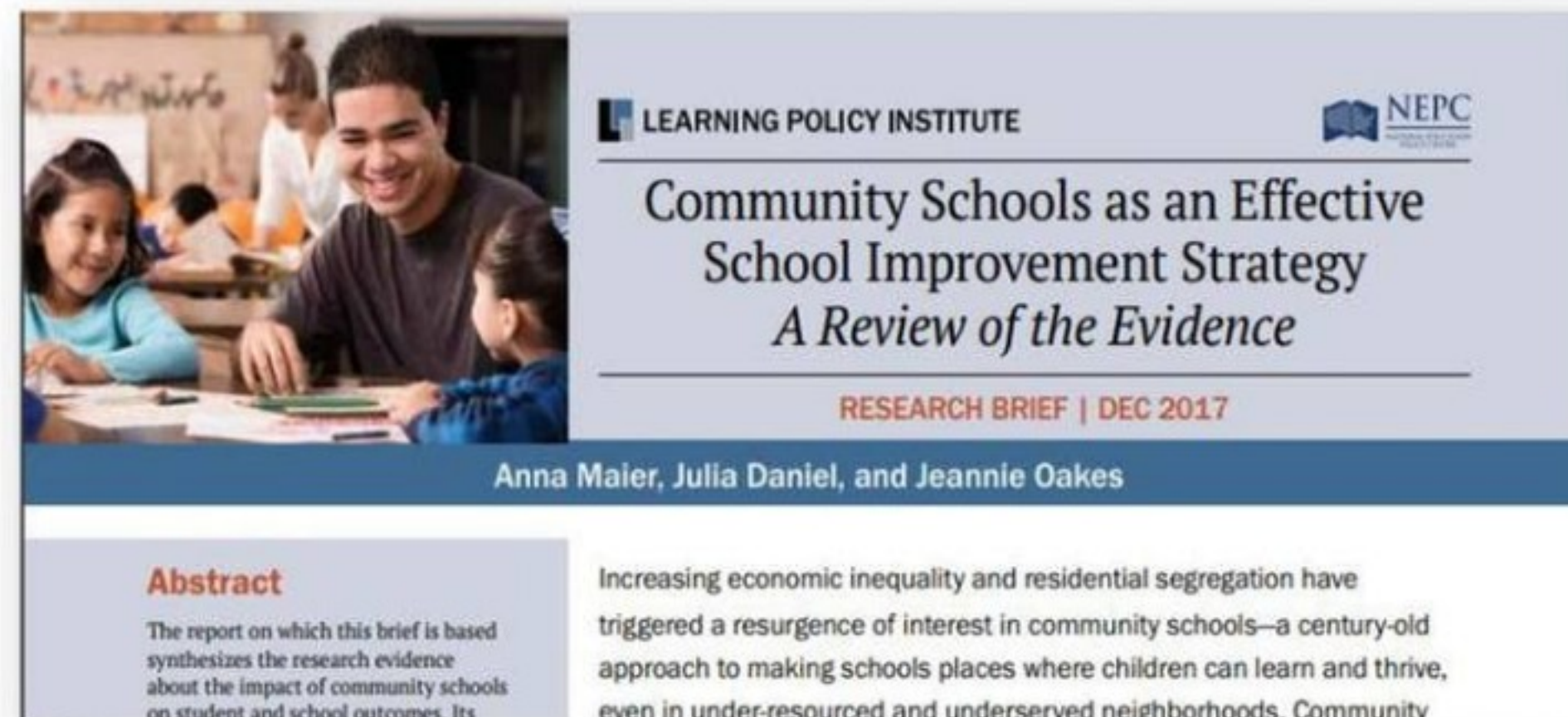
A Case Study




SNAPSHOT 
ROI OF A COORDINATOR

$$\text{ROI} = \frac{\$1,202,736 - \$148,258}{\$148,258} \times 100 = \mathbf{711\%}$$

Resulting in each \$1 invested in the coordinator **returning approximately \$7.11 net benefits.**



LEARNING POLICY INSTITUTE 

Community Schools as an Effective
School Improvement Strategy
A Review of the Evidence

RESEARCH BRIEF | DEC 2017

Anna Maier, Julia Daniel, and Jeannie Oakes

Abstract
The report on which this brief is based synthesizes the research evidence about the impact of community schools on student and school outcomes. Its

Increasing economic inequality and residential segregation have triggered a resurgence of interest in community schools—a century-old approach to making schools places where children can learn and thrive, even in under-resourced and underserved neighborhoods. Community

Results Framework

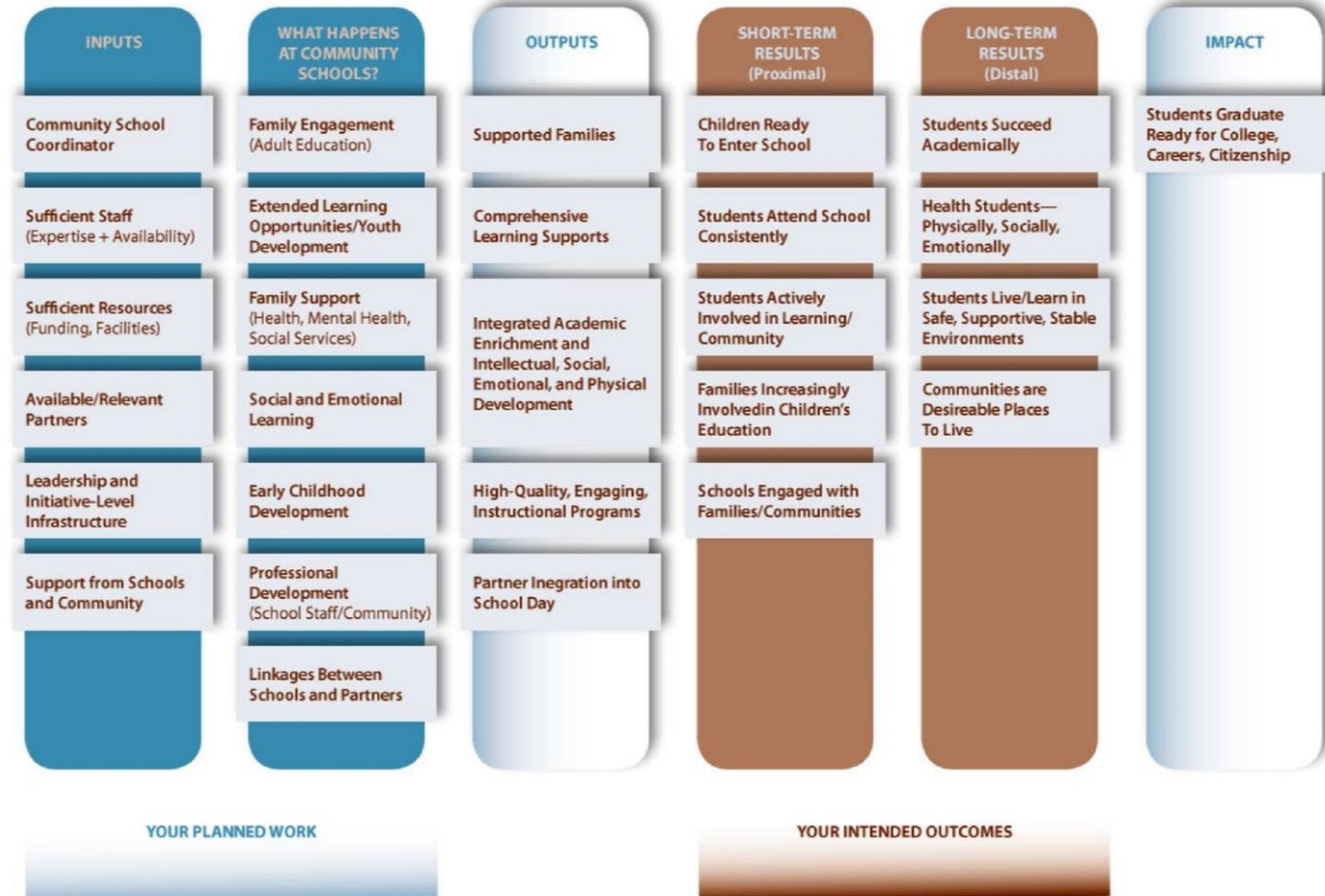
What is a “Result”?



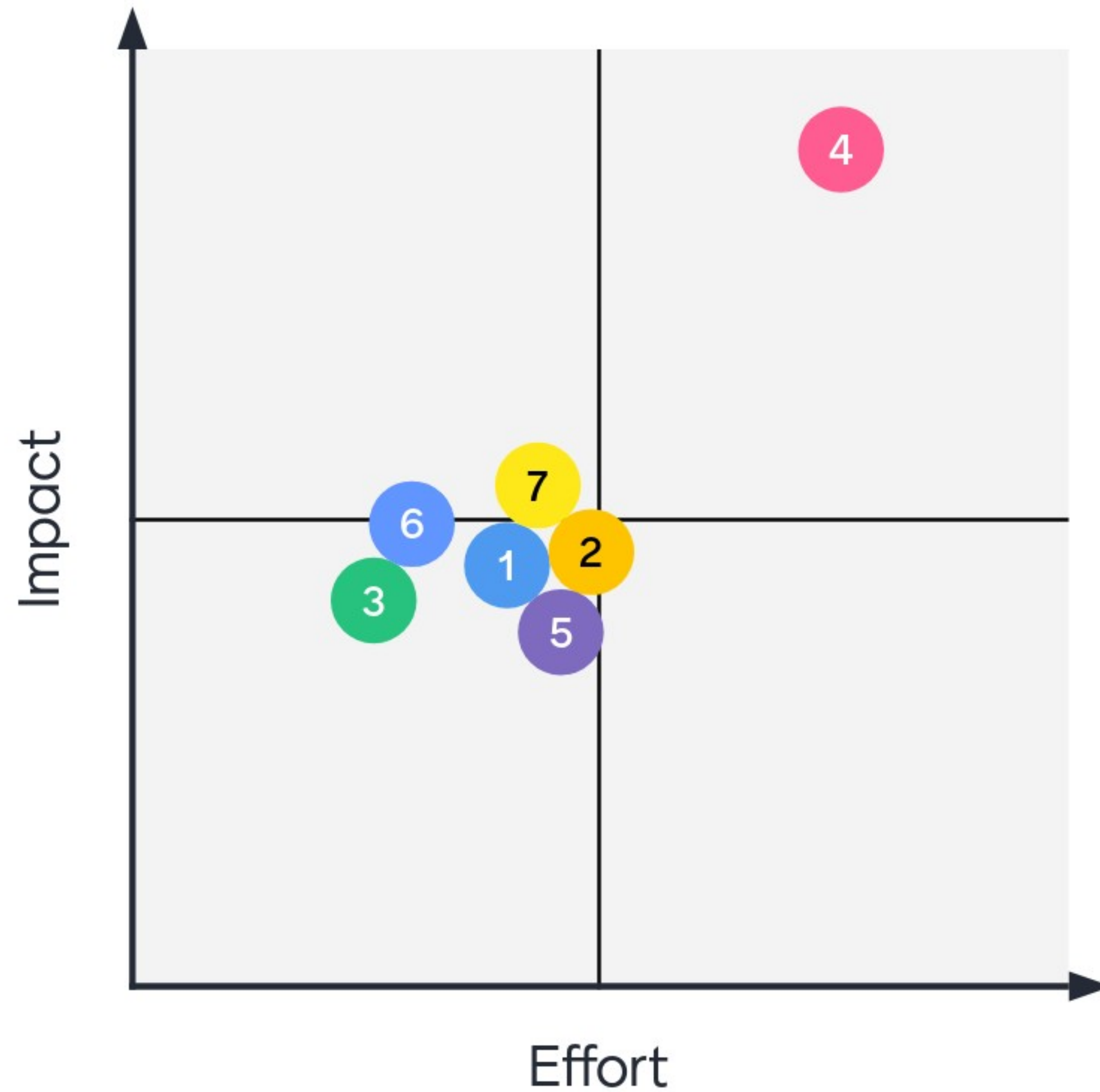
Measuring Results

Results	Indicators
Children are ready to enter school	<ul style="list-style-type: none">•
Students succeed academically	<ul style="list-style-type: none">• Advancing to next grade level• SRI Scores
Students are actively involved in learning and in their community	<ul style="list-style-type: none">• Attendance
Students are healthy: physically, socially, and emotionally	<ul style="list-style-type: none">• Survey results• Insurance coverage• Vaccinations
Students live and learn in stable and supportive environments	<ul style="list-style-type: none">• Student mobility
Families are actively involved in their children's education	<ul style="list-style-type: none">• Parent/Teacher Conf. Attendance• Back to School Nights• Classroom volunteering
Communities are desirable places to live	<ul style="list-style-type: none">• Mobility rates

COMMUNITY SCHOOLS LOGIC MODEL



Which "Result" should we focus on?

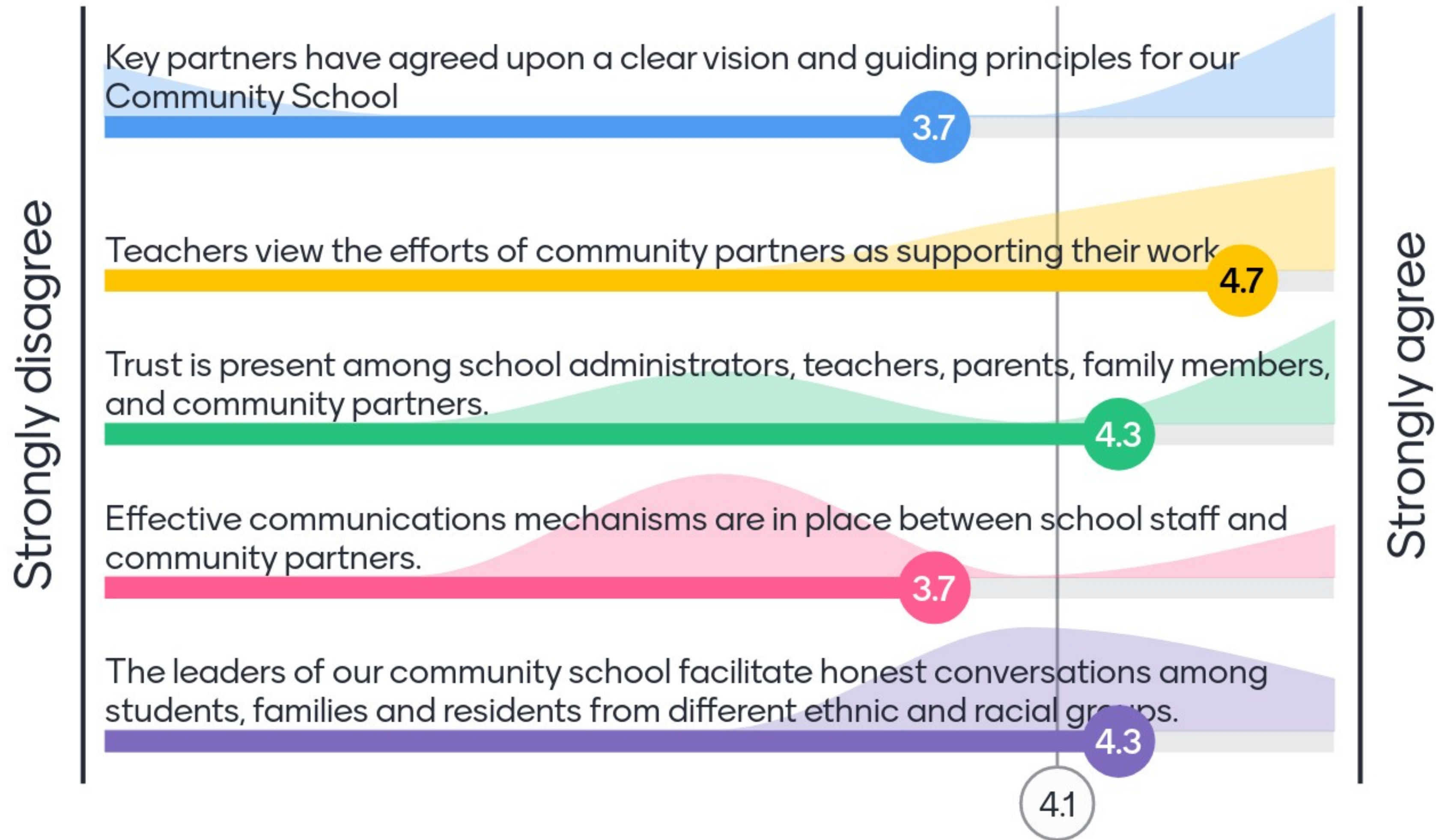


- 1 Children are ready to enter school
- 2 Students succeed academically
- 3 Students are actively engaged in their community
- 4 Students are health: physically, socially, and emotionally
- 5 Students live & learn in stable and supportive environments
- 6 Families are actively involved in their children's education
- 7 Communities are desirable places to live

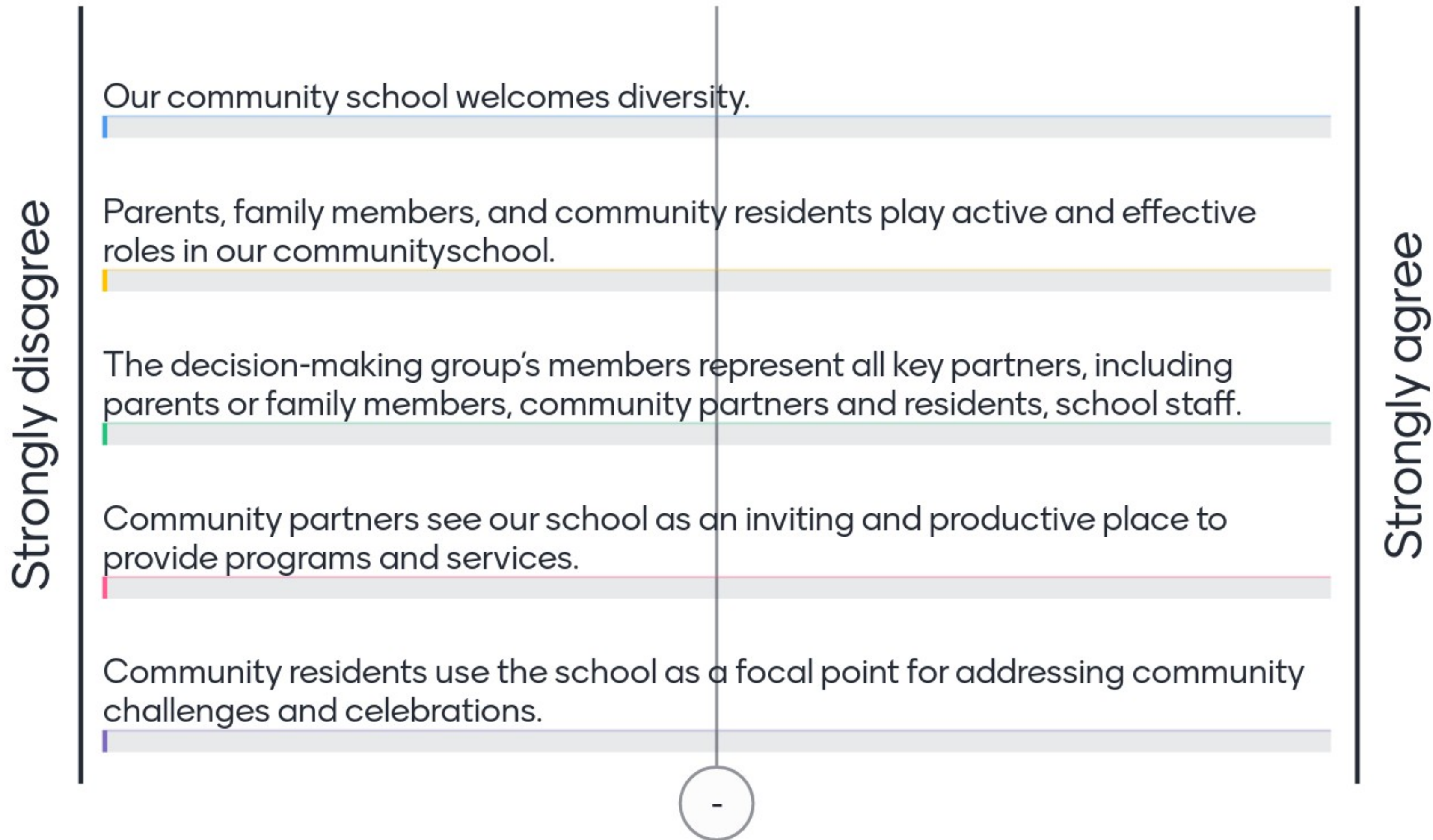
How ready are you?



Leadership and Management



Relationships with Partners



Sustainability



How can the Coalition support you?



Provide leadership development to know “how” to Community School




Coach continuous improvement of your Community School



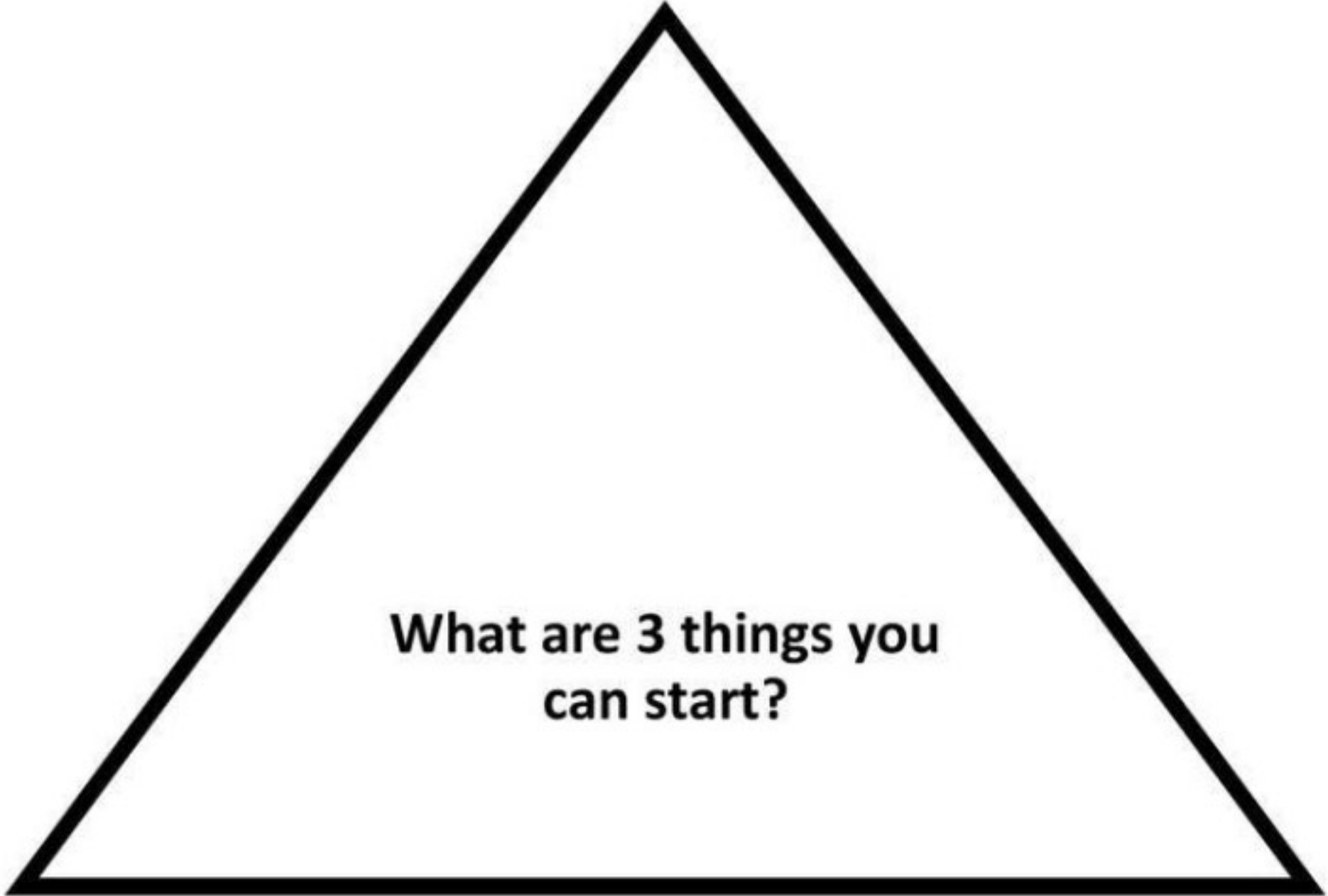
Connect you with other Community Schools



What squares with you?



What questions are
circling around in
your mind?



What are 3 things you
can start?